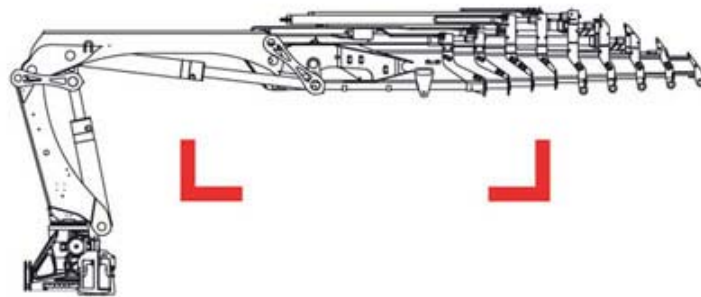
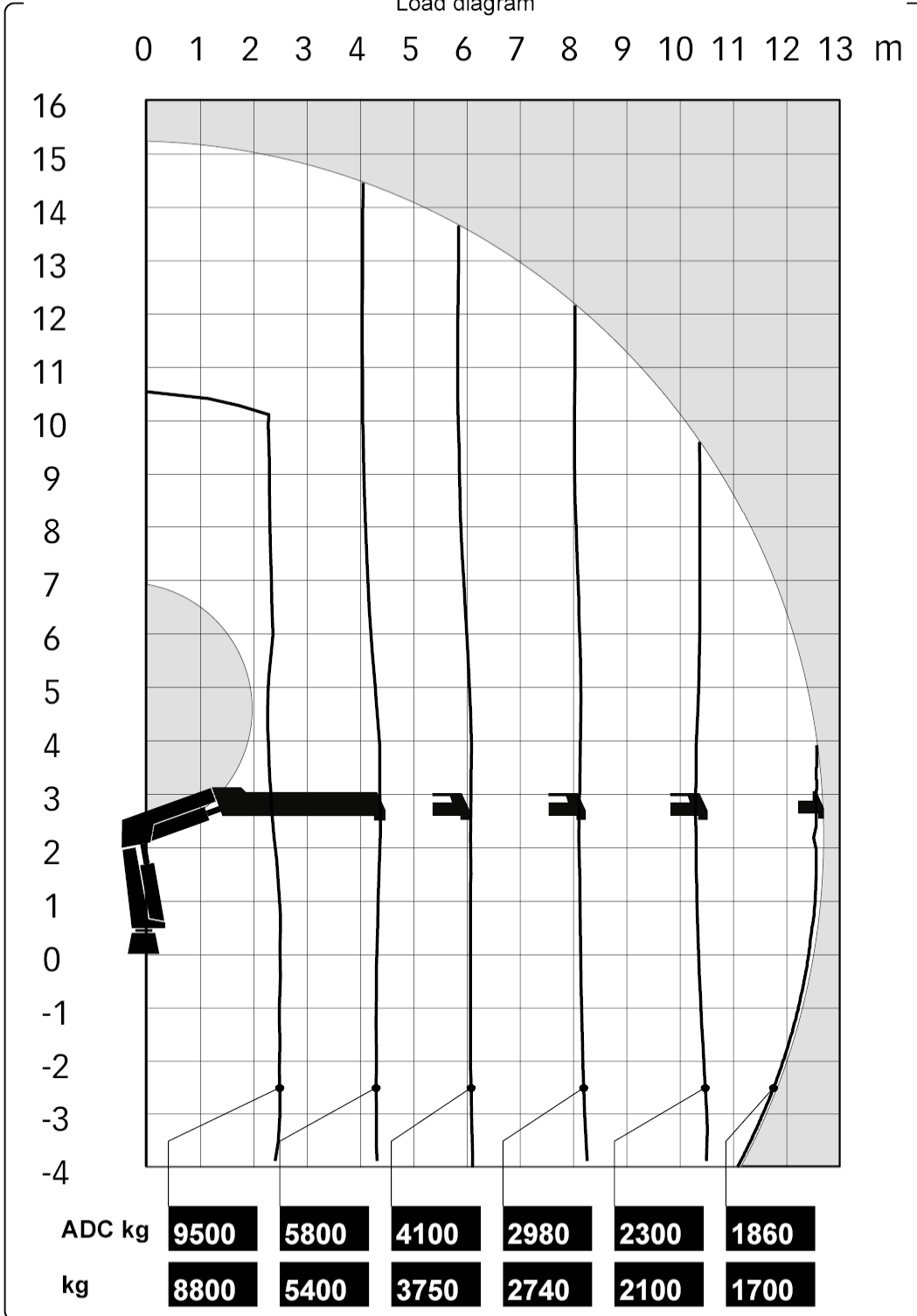


HIAB 288 EP-4 HiDuo

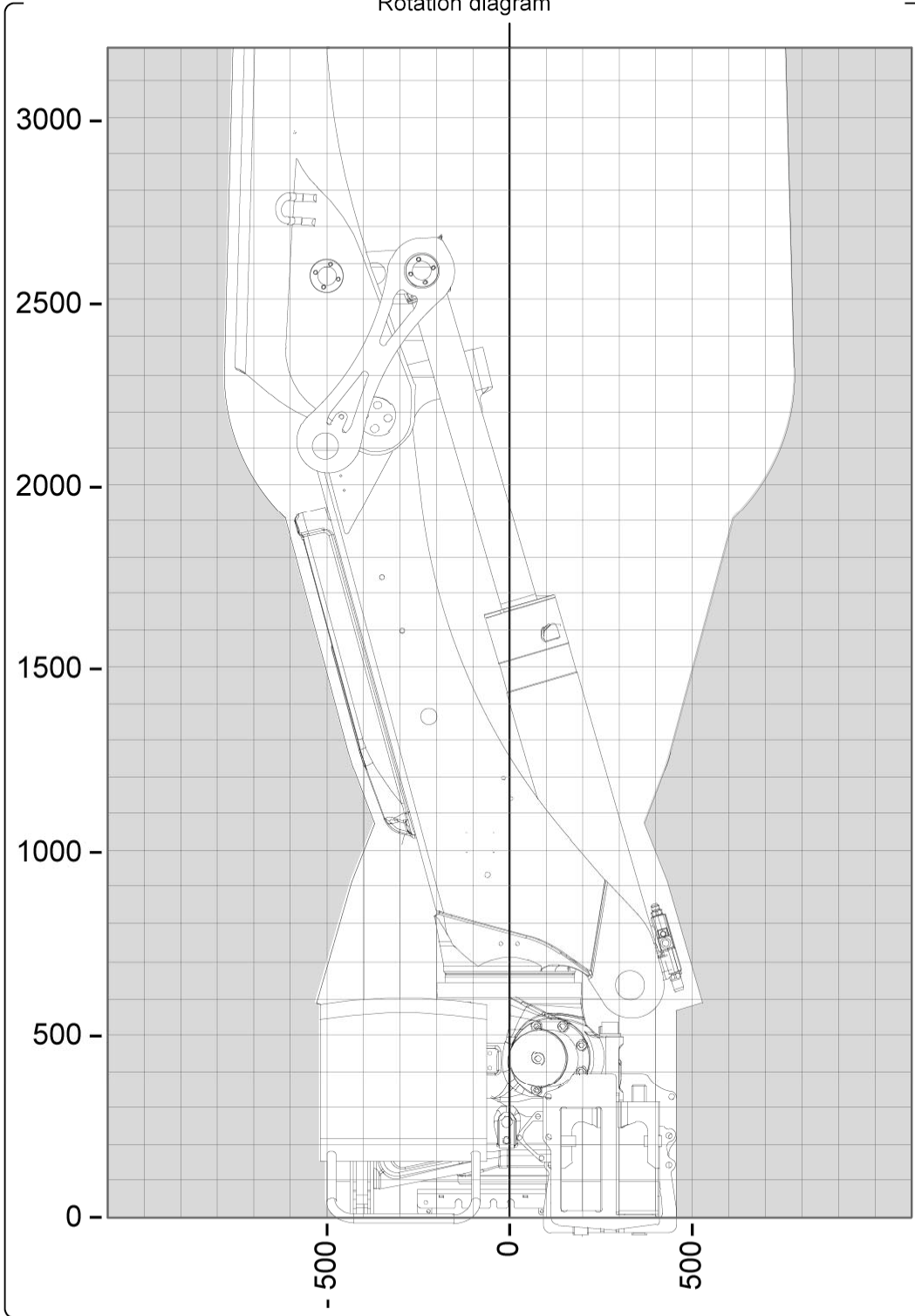


Technical Data

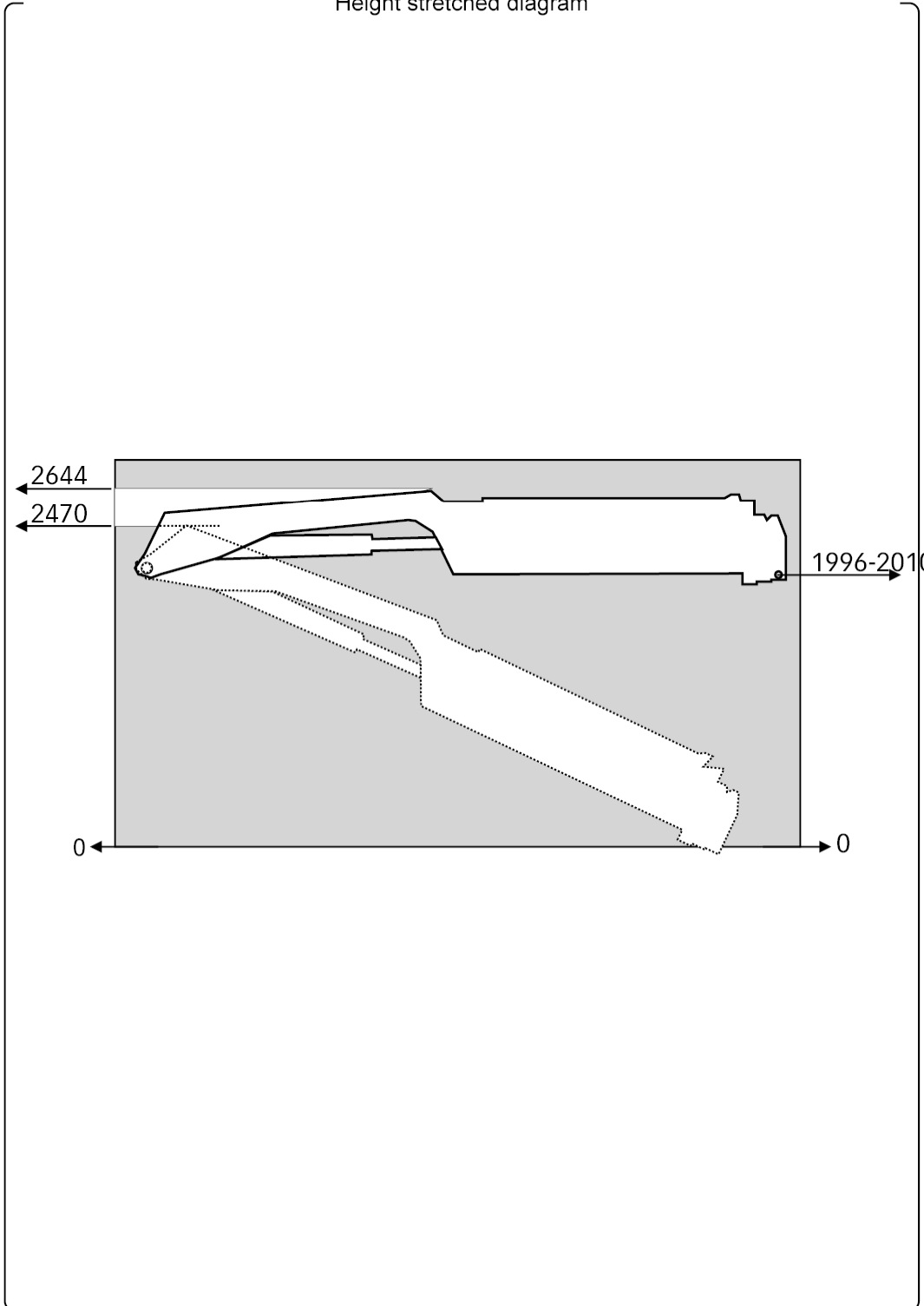
Load diagram



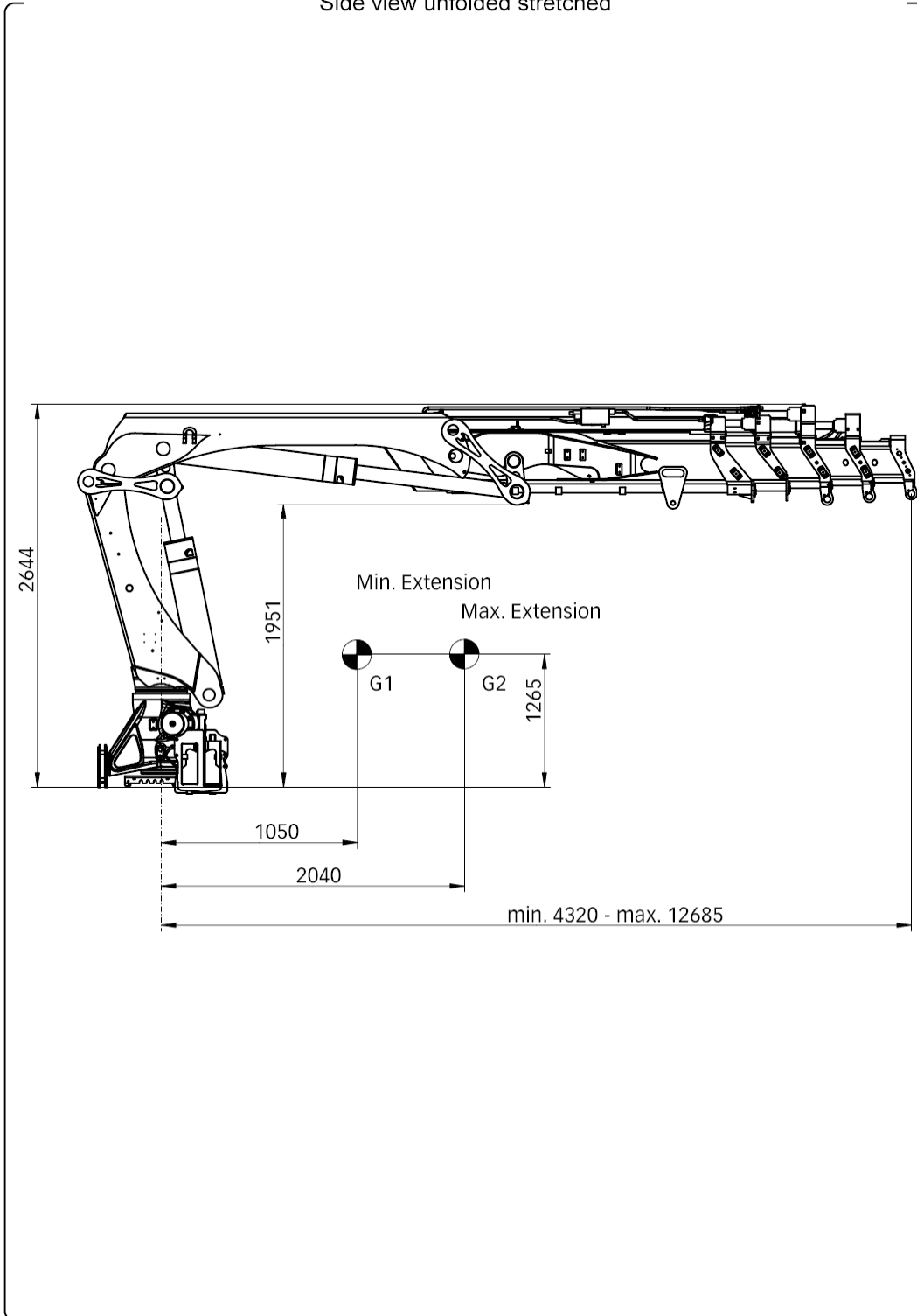
Rotation diagram



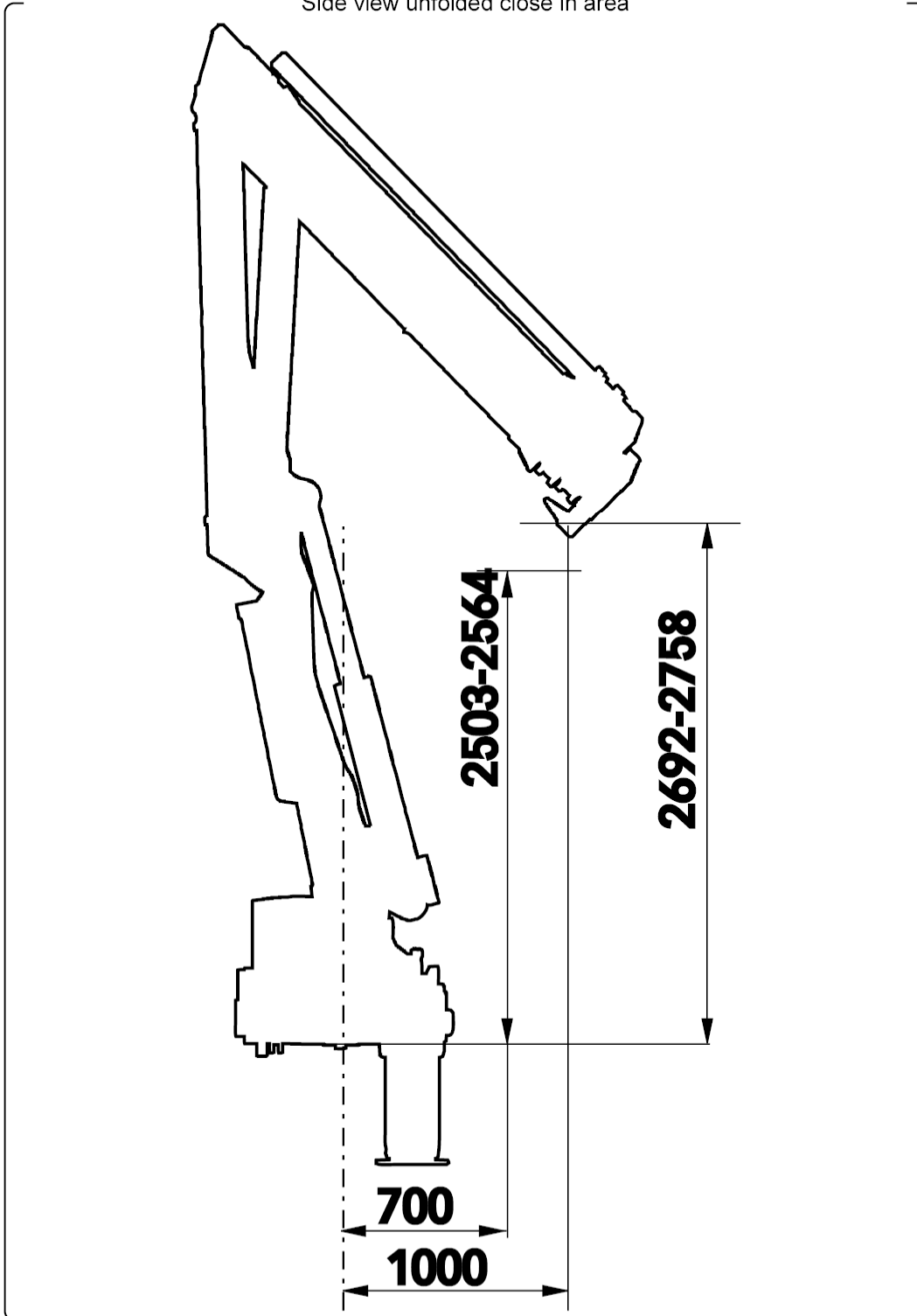
Height stretched diagram



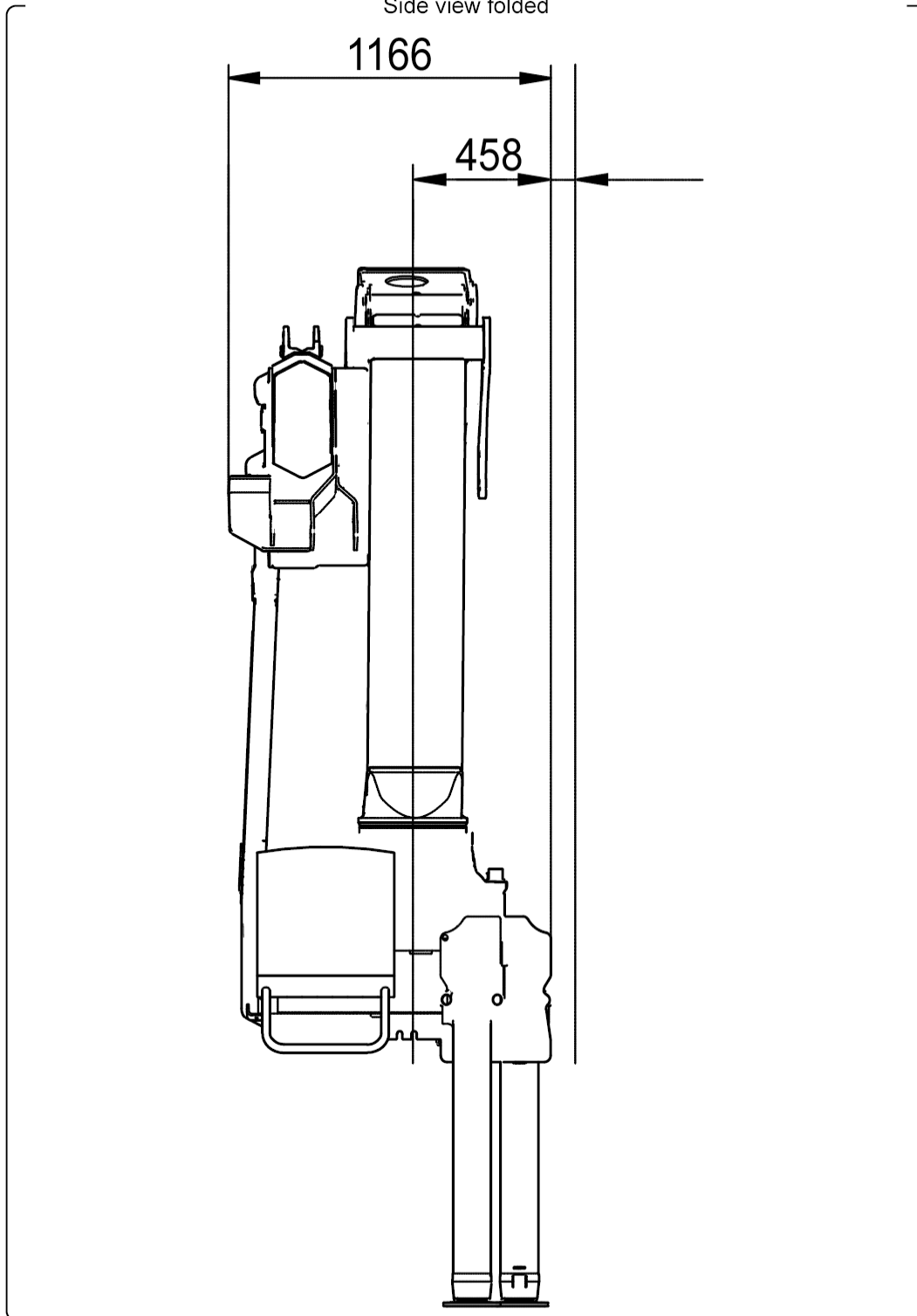
Side view unfolded stretched



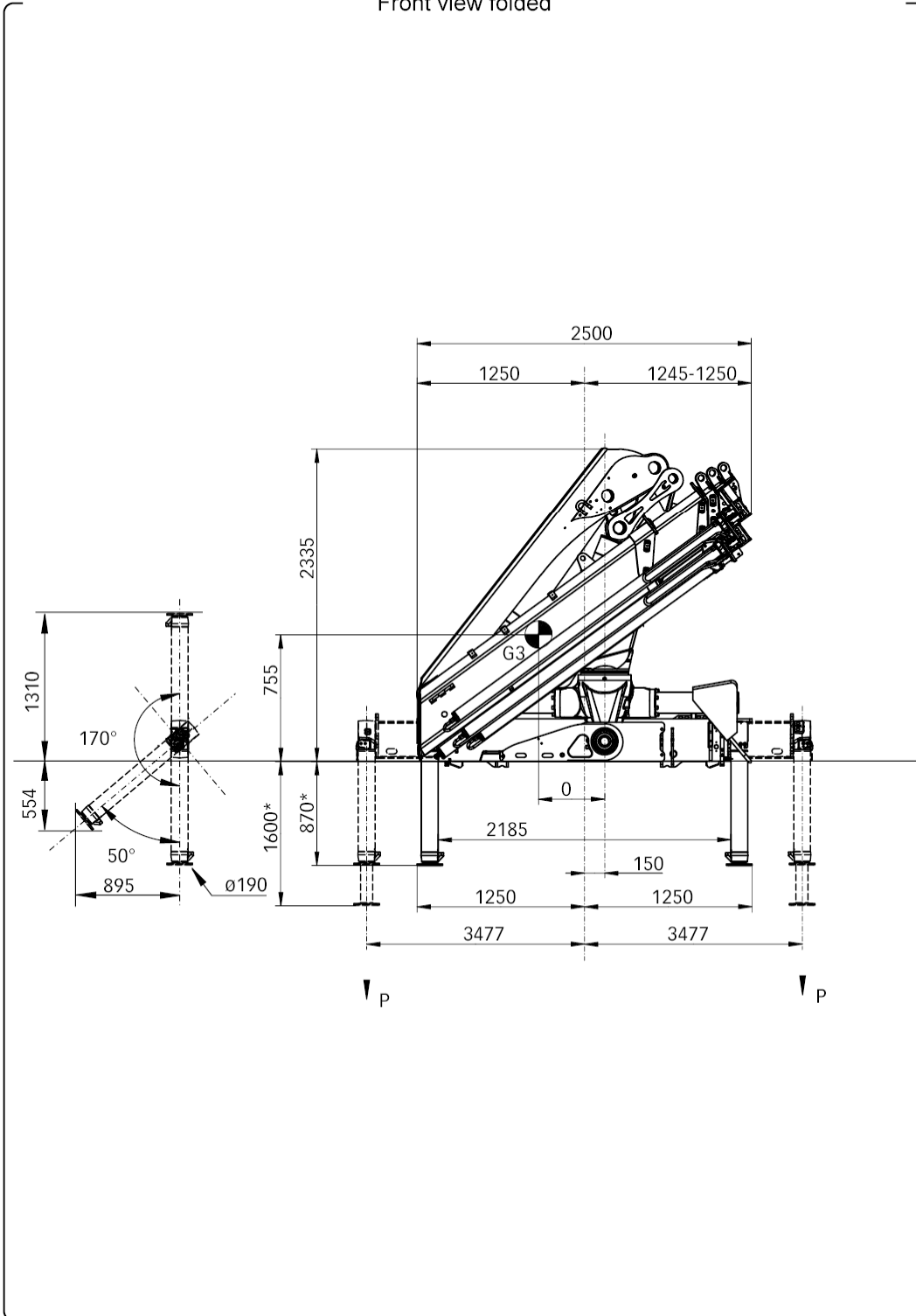
Side view unfolded close in area



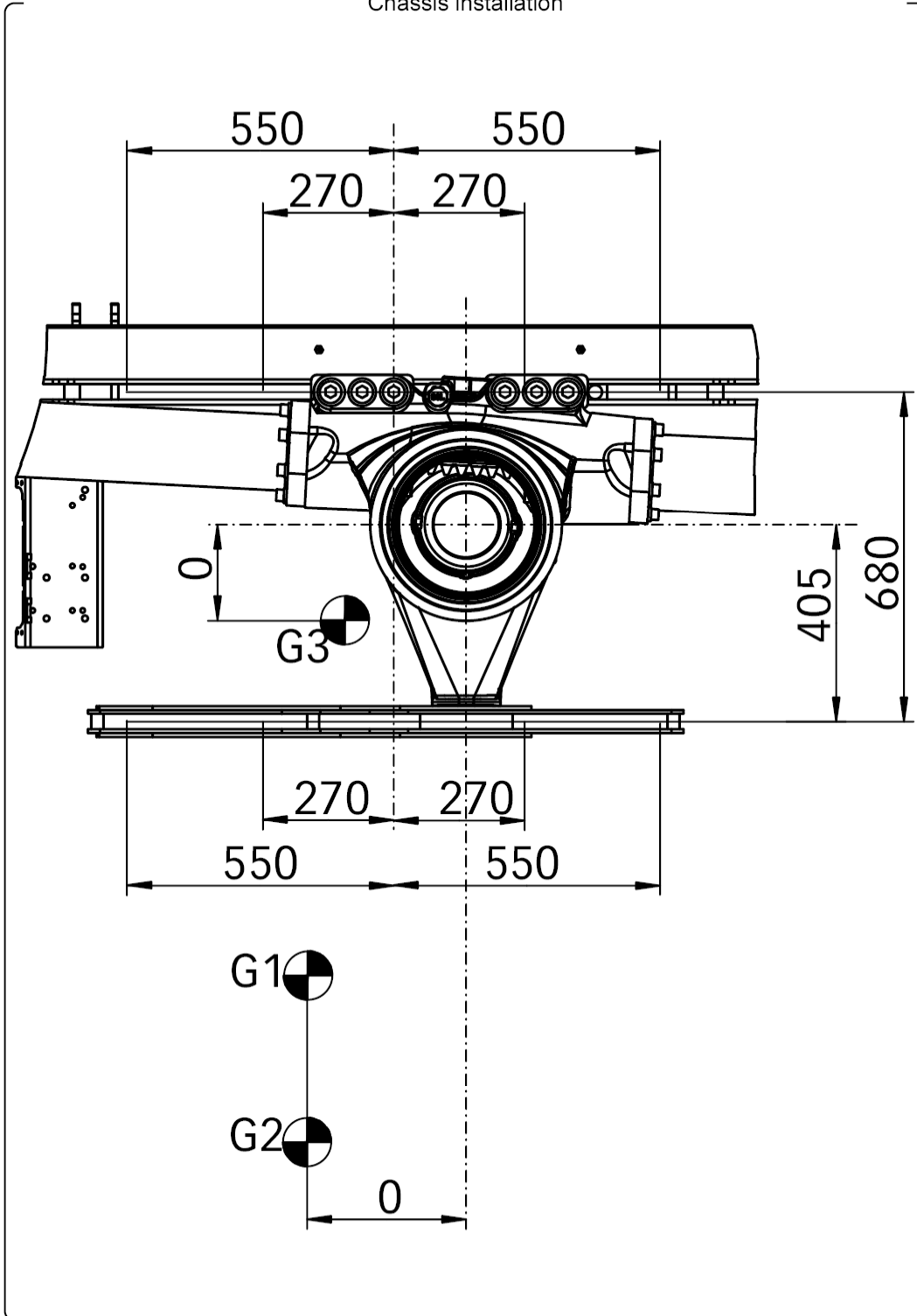
Side view folded



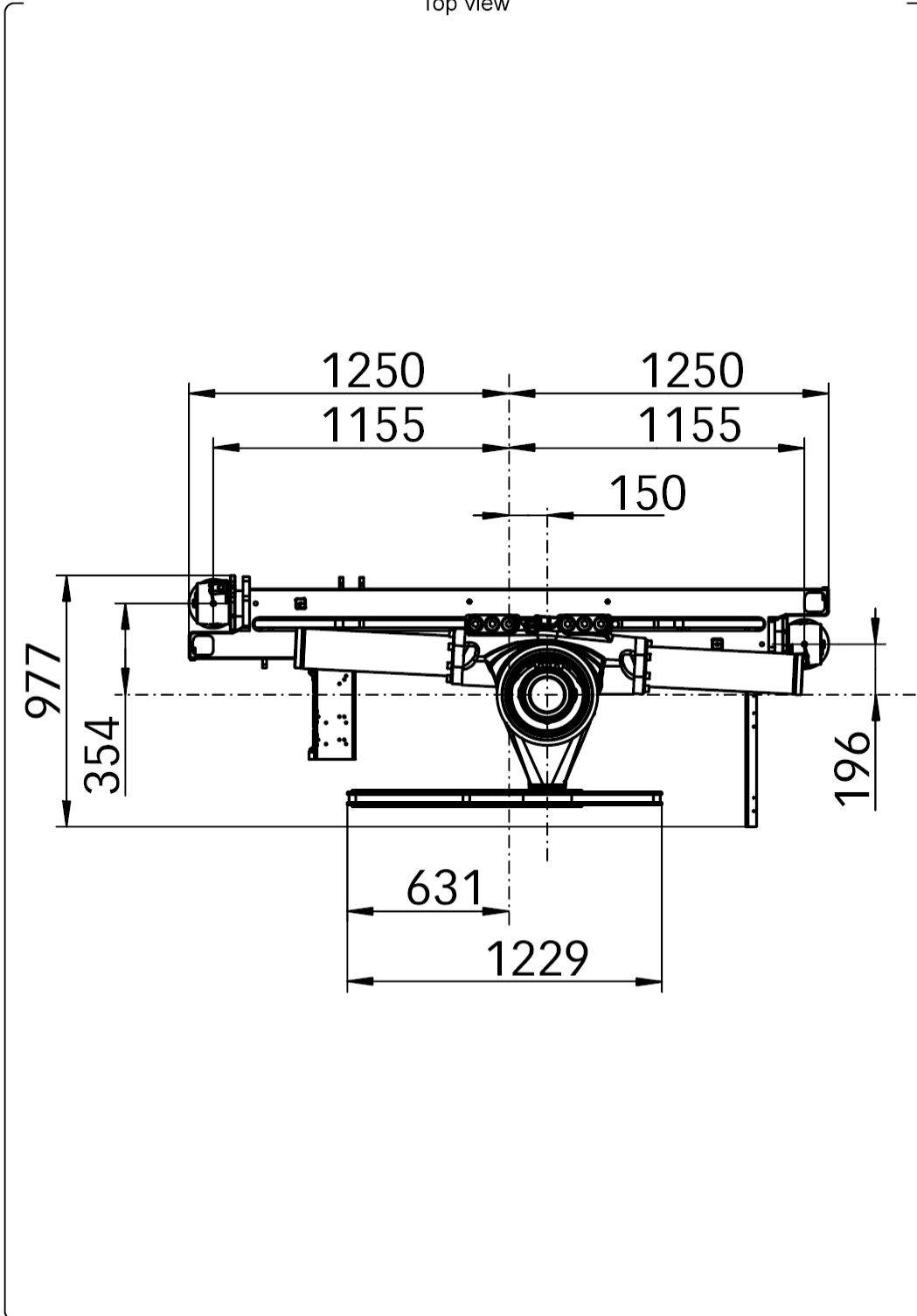
Front view folded



Chassis installation



Top view



The HIAB XS range



HIAB 288 HIDUO CE-marked.

Crane base

The HIAB 288 has a base with 3 point bridge, suitable for truck mounting. It is provided with a single slewing system of rack/pinion type, which is running in an oil bath. The slewing stop position is placed

frontward and the crane has a Full working area of 420°.

Stabilisers

On the left-hand side the crane is equipped with a hydraulically operated, long stabiliser extension, providing a spread of 3.5 m (11' 6") from the frame centre, including HP hoses and connections. A long, double acting stabiliser leg is fitted with a reinforced and pre-mounted tilting device, providing to manually swing the stabiliser leg to an upright position alternatively to plus/minus 50° from down vertical position. Provides locking the stabiliser legs in given positions. On the right-hand side the crane is equipped with a hydraulically operated, long stabiliser extension, providing a spread of 3.5 m (11' 6") from the frame centre, including HP hoses and connections. A long, double acting stabiliser leg is fitted with a reinforced and pre-mounted tilting device, providing to manually swing the stabiliser leg to an upright position alternatively to plus/minus 50° from down vertical position. Provides locking the stabiliser legs in given positions.

Boom

The crane has a foldable boom system, a first and second boom link and 4 hydraulic extensions, providing an outreach from 4,4 metres / 14' 5" to 12,7 metres / 41' 8". Its P-boom system boom system maximises the crane outreach as well as reduces the crane weight and increases the net lifting capacity. The extension system has its cylinder layout prepared for an additional boom extension in the future, including a mounting bracket for the next cylinder. Extension cylinders control is random. There is a hook attachments on one or more extensions.

Hydraulic system

All cylinders on this crane are double acting and all crane functions have load holding valves. The main control valve of the crane is a 6 function, Parker V-80R valve for remote control. The levers on the valve are protected with a safety guard. The crane stabilisers will be operated from a separate valve, so an additional valve for 4 functions is mounted. Additional options: High-pressure filter that is pre-mounted on crane base and connected to the main-valve. Hydraulic couplings according to ISO 8434 (Jic).

Control system

The crane is remote controlled by a 6 function radio remote control, type HIAB XS-Drive and has levers on the left hand side of the crane base for emergency operation. The stabiliser functions are controlled by the remote control too. Additional options: additional harness for remote control unit.

Electronics & power supply

The crane is equipped with SPACE 4000 including OLP overload protection, warning at 90% of max load, protection from operating the outrigger legs on 5th and 6th function when loaded, start and stop button, electronic cut out function after 30 minutes without touching the levers, ADO (Automatic Dumping of Oil) and optional a height warning for raised inner boom. As standard it has five 24 volts relay outputs. Additional options: one sector of limited capacity, Audio visual warning kit for radio remote control. Includes warning horn (to be activated by the operator) and a three colour lamp set (green: system active, yellow: 90% pre-warning and red: OLP). Height warning kit to warn the driver that the crane boom is not parked satisfactory. The kit delivers a signal that can be connected to a warning device (not included). stabiliser warning kit to warn the driver that the stabilisers are not stowed (up and in). The kit delivers a signal that can be connected to a warning device (not included).

Additional items

The following items will be delivered to the crane:

- A 150 litre (39.6 Gal) oil tank for separate installation. Including built-in return oil filter with indicator, air breather, filler strainer, oil level indicator, drainage tap for tapping condensation water and a tank fitting kit
- EMC-approved air oil cooler with built in by-pass valve. Equipped with electronic soft start for eliminating a voltage drop in the electrical system when it starts up. Includes thermostat, relay and fuse. (24 Volts / 8,75 Ampere.)
- Complete frame attachment kit of type, bolt on, offering a grip of 150 to 550 mm (6 - 22"). The kit consists of 8 stud bolts M30, length 950 mm (37") and other necessary hardware
- Truck mounting kit comprising of a 3/4" (Ø 19 mm) high pressure hose for connection of the crane to pump, length 2240 mm. Suction hose, inner diameter Ø 50 mm, to connect the pump to the tank, length 2000 mm, and necessary hose clips.
- Crane spray painted in a different colour. RAL Code to be indicated.

Documents

The following documentation will be delivered to the crane:

- Operator's manual in English, German and French
- Product declaration for the crane.

Version

HIAB 288 EP-4 HiDuo

M_{dyn}	330 kNm
Lifting capacity	232 kNm
Lifting capacity	23.7 tm
Lifting capacity (ADC)	250 kNm
Lifting capacity (ADC)	25.5 tm
Outreach - lifting capacity, standard	2.6 m - 9,500 kg 4.4 m - 5,800 kg 6.1 m - 4,100 kg 8.1 m - 2,980 kg 10.3 m - 2,300 kg 12.6 m - 1,860 kg
Outreach - lifting capacity, manual extensions	
Hydraulic outreach, standard	12.7 m
Hydraulic boom extension	8.3 m
Outreach, manual extensions	17.3 m
Lifting height above installation level, hydr/man	15.3 / 19.8 m
Rec. oil flow	70 - 90 l/min
Working pressure	33.0 Mpa
Oil in tank	150 l
Tank capacity	175 l
Slewing angle	420°
Max slope viable at full capacity	5°
Slewing torque, gross	34.0 kNm
Slewing speed 80	15°/s
Lifting speed at standard hydraulic outreach	2.0 m/s
Height in folded position	2,335 mm
Width in folded position	2,500 mm
Install space required. Rotation area not included	1,166 mm
Install space required with hose and pipe kit	1,166 mm
Weight	
Crane in standard version without support legs	3,010 kg
Top seat	0 kg
Frame attachments	40 - 60 kg
Support leg equipment	381 - 487 kg

Data sheet

HIAB 288 EP-4 HiDuo